

DESCRIPTION

AMC MODEL MSN-5DR/DT-05-DEC-SP-GP IS A SP5T REFLECTIVE OR NON-REFLECTIVE/ABSORPTIVE SOLID STATE PIN DIODE SWITCH WITH A FREQUENCY RANGE OF 0.5 TO 18 GHz, GOLD PLATED HOUSING, AND 3 A BIT DECODER WITH SOLDER PINS.

REVISIONS				
ZONE	REV.	DESCRIPTION	DATE	APPROVED
-	-	ORIGINAL RELEASE JOB# 405092X	5/18/04	

SPECIFICATIONS:

- FREQUENCY:** 0.5 GHz TO 18 GHz
- INSERTION LOSS:** REFLECTIVE: 3.25db
ABSORPTIVE: 4.0db
- ISOLATION:** 0.5 GHz TO 2 GHz: 60db
2 GHz TO 18 GHz: 70db
- VSWR:** REFLECTIVE IN/OUT: 2.0:1
ABSORPTIVE IN/OUT: 2.0:1
ABSORPTIVE OUT/OFF: 2.0:1
- SPEED:** RISE: 10ns TYPICAL, 15ns MAX.
FALL: 10ns TYPICAL, 15ns MAX.
DELAY ON: 75ns TYPICAL, 100ns MAX.
DELAY OFF: 75ns TYPICAL, 100ns MAX.
- POWER INPUT:** (CW)+20dBm (STANDARD)
- SURVIVAL POWER:** 1 WATT CW, 10 WATTS PEAK 1 usec
- CONTROL:** SEE LOGIC TABLE
- POWER SUPPLY:** +5V @ 250 mA MAX.
-5V @ 75mA MAX.(REFLECTIVE)
100mA MAX.(ABSORPTIVE/NON-REFLECTIVE)

OPTIONS:

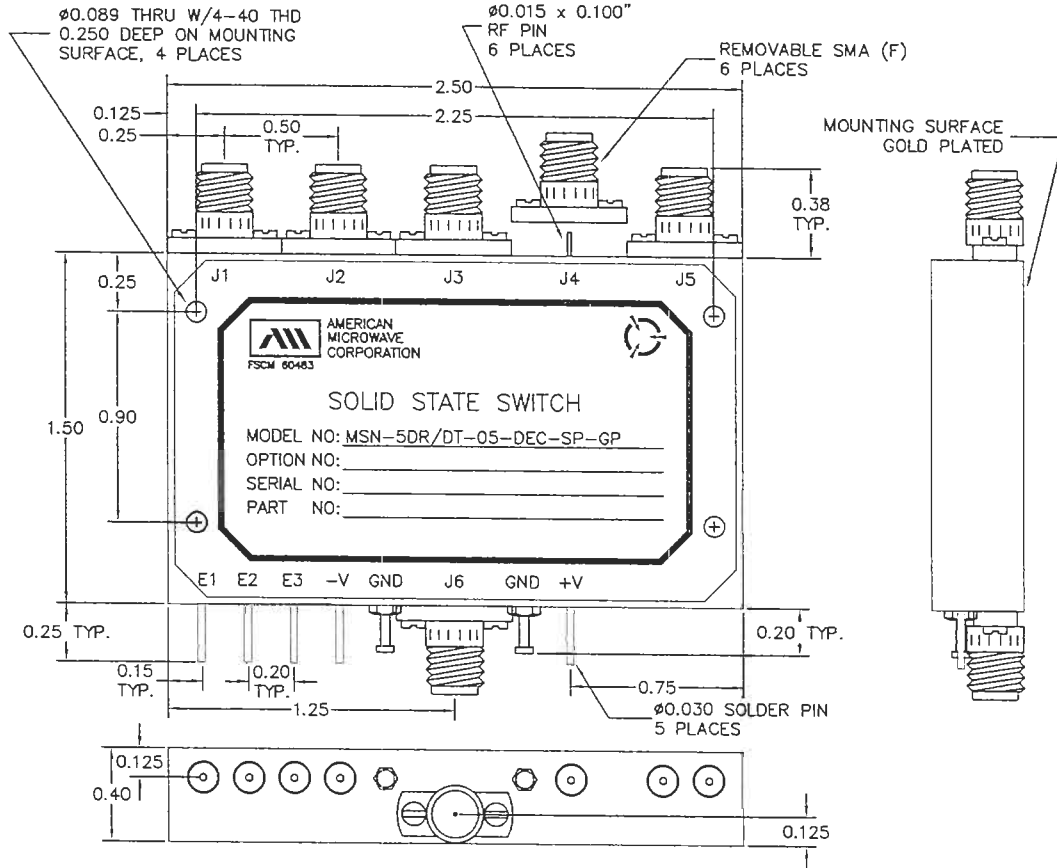
- GP- GOLD PLATED
- DEC-SP- 3 BIT DECODER WITH SOLDER PIN

INPUTS			PORT ON
E1	E2	E3	
L	L	L	J1
H	L	L	J2
L	H	L	J3
H	H	L	J4
L	L	H	J5

ENVIRONMENTAL RATINGS:

- TEMPERATURE:** -55°C TO +85°C (OPERATING)
-65°C TO +125°C (STORAGE)
- HUMIDITY:** MIL-STD-202F, METHOD 103B COND. B
- SHOCK:** MIL-STD-202F, METHOD 213B COND. B
- VIBRATION:** MIL-STD-202F, METHOD 204D COND. B
- ALTITUDE:** MIL-STD-202F, METHOD 105C COND. B
- TEMPERATURE CYCLE:** MIL-STD-202F, METHOD 107D COND. A

NOTE: SPECIFICATIONS WILL VARY OVER OPERATING TEMPERATURE
NOTE: THE ABOVE SPECIFICATIONS ARE SUBJECT TO CHANGE OR REVISION



ALL DIMENSIONS ARE IN INCHES
TOLERANCES:
X.XX ±0.010
X.XXX ±0.005

AMERICAN MICROWAVE CORPORATION

7311-G GROVE ROAD
FREDERICK, MARYLAND 21704 USA
TEL: 301-662-4700 FAX: 301-662-4938
WEBSITE: www.americanmicrowavecorp.com
E-MAIL: sales@americanmicrowavecorp.com
ISO 9001:2000 CERTIFIED



APPROVALS		DATE	TITLE			REV.
DRAWN	<i>JKM</i>	5/18/04	PRODUCT FEATURE			-
REDRAWN	<i>JDJ</i>	8/10/04	MSN-5DR/DT-05-DEC-SP-GP			-
ISSUED	<i>JA</i>	9/2/04	REFLECTIVE OR NON-REFLECTIVE/ABSORPTIVE			-
			SOLID STATE SWITCH			-
SIZE	FSCM NO.	DWG NO.				
A	60483	100-6995				
SCALE N:S			SHEET		1 OF 3	